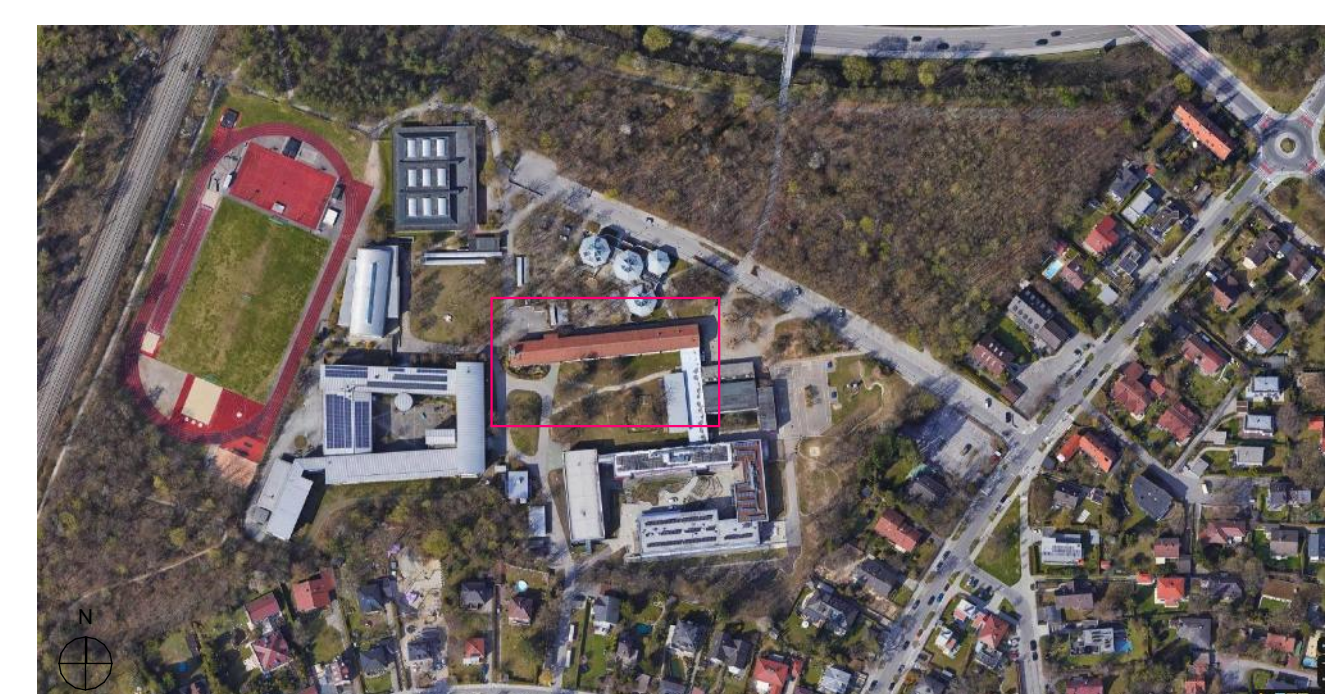



Bauvorhaben	KHG-NT Kurt-Hubert-Gymnasium _ Sanierung Nordtrakt
Ort des Vorhabens	Adalbert-Stifter-Platz 1 82166 Gräfelfing
Bauherr	Gemeinde Gräfelfing Ruffiniallee 2 82166 Gräfelfing



Planungsphase	Werkplanung	Maßstab	1:100
Planimhalt	Ausführungsplan Freianlagen		Nord 
Plannummer	01	±0.00m = 53749 m ü NN	
Index	Planformat: DIN A0	Datum	22.01.26
Geschrieben	Freigabe		

This architectural drawing consists of a vertical section on the left and a site plan on the right. The section shows a building with a sloped roof, multiple floors, and a central vertical shaft. The site plan shows a building footprint, a central tower-like structure, and a landscaped area with trees and a path. A scale bar at the bottom indicates distances in meters.